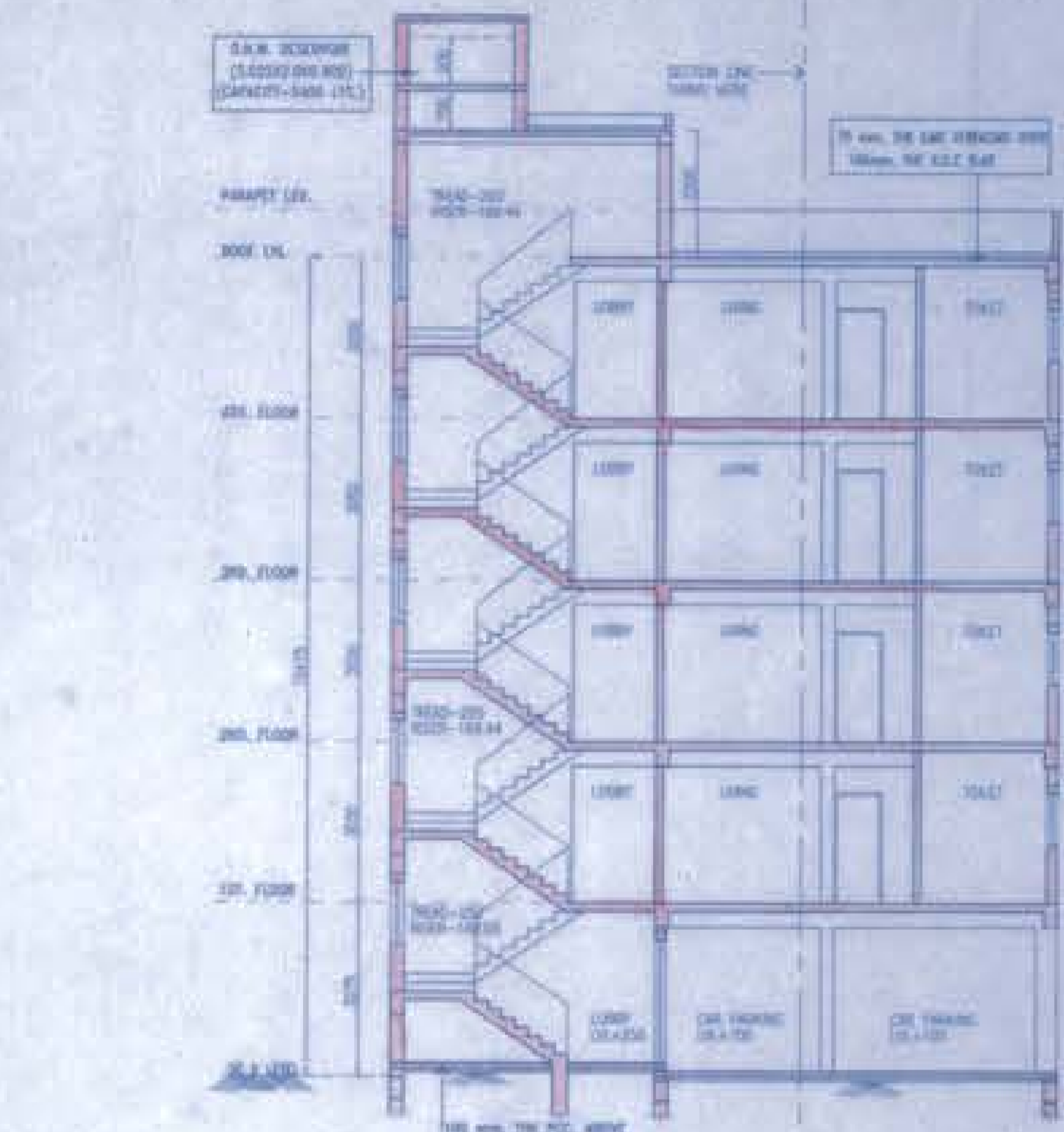
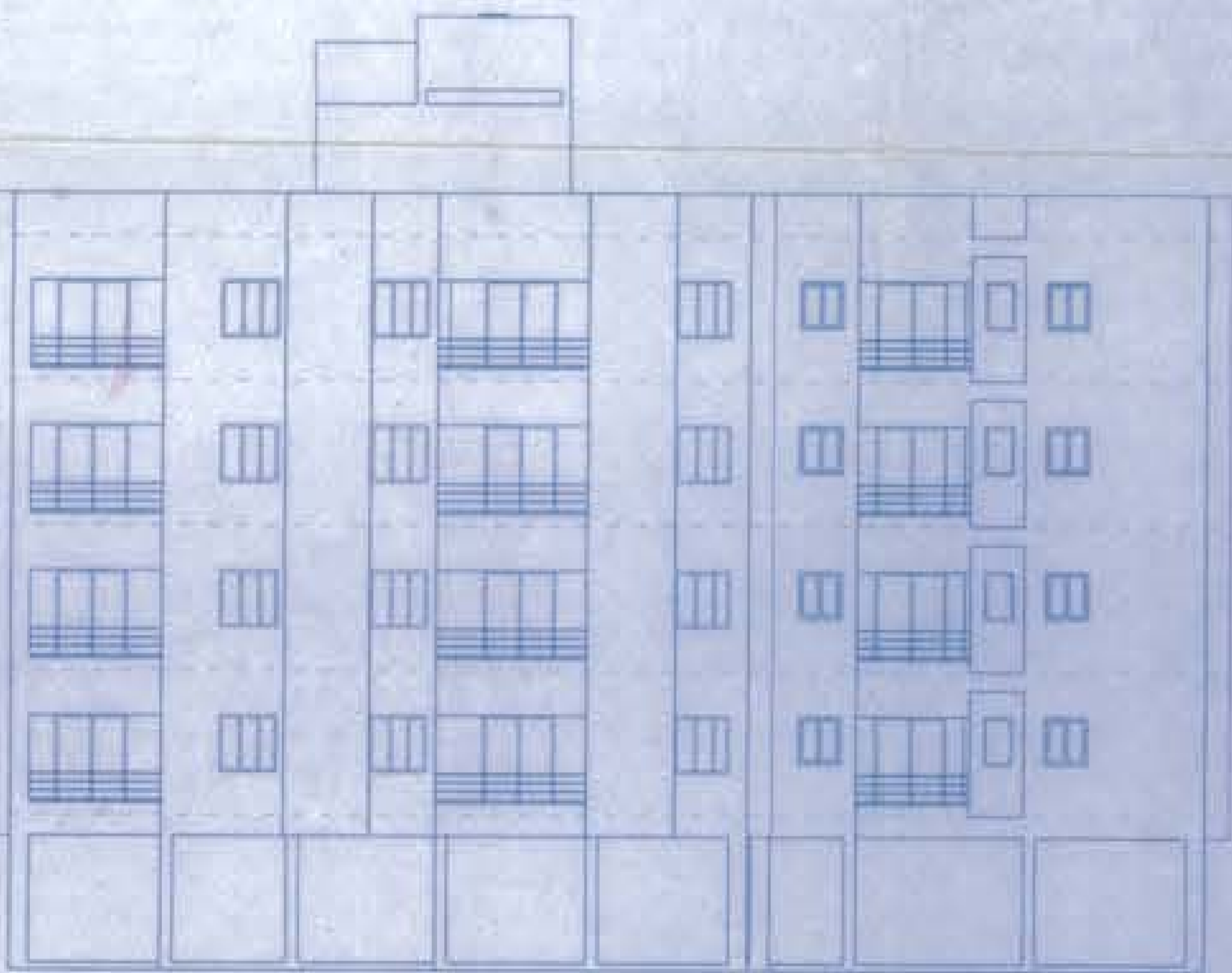


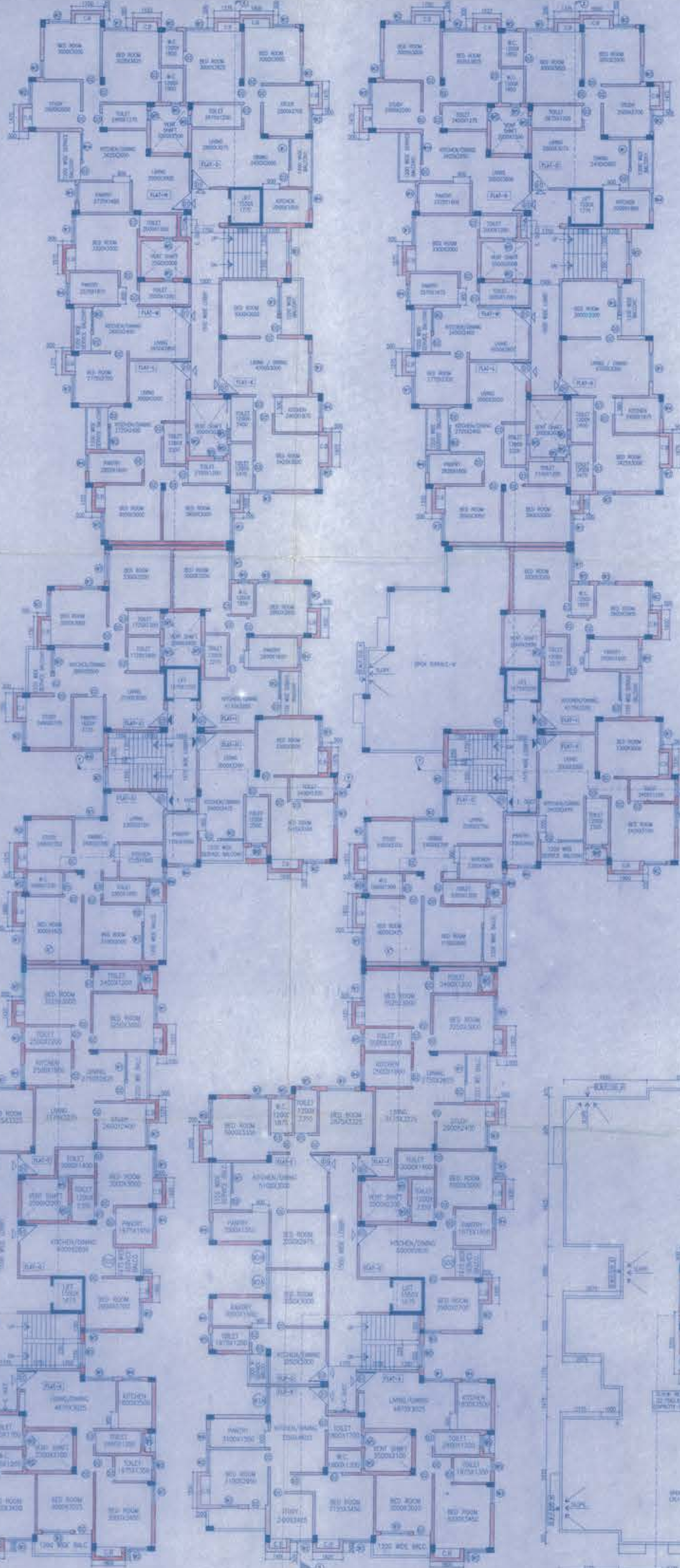
BLOCK-2
SECTION X-X



BLOCK-2
SECTION Y-Y



BLOCK-2
FRONT ELEVATION



BLOCK-2
TYPICAL FLOOR PLAN (1ST TO 3RD)

BLOCK-2
FOURTH FLOOR PLAN

BLOCK-2
ROOF PLAN

SPECIFICATION OF CONSTRUCTION -

1. ALL THE WORK SHALL BE DONE IN ACCORDANCE WITH THE IS CODES.
2. ALL THE WORK SHALL BE DONE WITH THE BEST QUALITY MATERIALS.
3. ALL THE WORK SHALL BE DONE WITH THE BEST QUALITY MATERIALS.
4. ALL THE WORK SHALL BE DONE WITH THE BEST QUALITY MATERIALS.
5. ALL THE WORK SHALL BE DONE WITH THE BEST QUALITY MATERIALS.
6. ALL THE WORK SHALL BE DONE WITH THE BEST QUALITY MATERIALS.
7. ALL THE WORK SHALL BE DONE WITH THE BEST QUALITY MATERIALS.
8. ALL THE WORK SHALL BE DONE WITH THE BEST QUALITY MATERIALS.
9. ALL THE WORK SHALL BE DONE WITH THE BEST QUALITY MATERIALS.
10. ALL THE WORK SHALL BE DONE WITH THE BEST QUALITY MATERIALS.
11. ALL THE WORK SHALL BE DONE WITH THE BEST QUALITY MATERIALS.
12. ALL THE WORK SHALL BE DONE WITH THE BEST QUALITY MATERIALS.
13. ALL THE WORK SHALL BE DONE WITH THE BEST QUALITY MATERIALS.
14. ALL THE WORK SHALL BE DONE WITH THE BEST QUALITY MATERIALS.
15. ALL THE WORK SHALL BE DONE WITH THE BEST QUALITY MATERIALS.
16. ALL THE WORK SHALL BE DONE WITH THE BEST QUALITY MATERIALS.
17. ALL THE WORK SHALL BE DONE WITH THE BEST QUALITY MATERIALS.
18. ALL THE WORK SHALL BE DONE WITH THE BEST QUALITY MATERIALS.
19. ALL THE WORK SHALL BE DONE WITH THE BEST QUALITY MATERIALS.
20. ALL THE WORK SHALL BE DONE WITH THE BEST QUALITY MATERIALS.

MATERIALS -

1. ALL THE MATERIALS SHALL BE OF THE BEST QUALITY.
2. ALL THE MATERIALS SHALL BE OF THE BEST QUALITY.
3. ALL THE MATERIALS SHALL BE OF THE BEST QUALITY.
4. ALL THE MATERIALS SHALL BE OF THE BEST QUALITY.
5. ALL THE MATERIALS SHALL BE OF THE BEST QUALITY.
6. ALL THE MATERIALS SHALL BE OF THE BEST QUALITY.
7. ALL THE MATERIALS SHALL BE OF THE BEST QUALITY.
8. ALL THE MATERIALS SHALL BE OF THE BEST QUALITY.
9. ALL THE MATERIALS SHALL BE OF THE BEST QUALITY.
10. ALL THE MATERIALS SHALL BE OF THE BEST QUALITY.
11. ALL THE MATERIALS SHALL BE OF THE BEST QUALITY.
12. ALL THE MATERIALS SHALL BE OF THE BEST QUALITY.
13. ALL THE MATERIALS SHALL BE OF THE BEST QUALITY.
14. ALL THE MATERIALS SHALL BE OF THE BEST QUALITY.
15. ALL THE MATERIALS SHALL BE OF THE BEST QUALITY.
16. ALL THE MATERIALS SHALL BE OF THE BEST QUALITY.
17. ALL THE MATERIALS SHALL BE OF THE BEST QUALITY.
18. ALL THE MATERIALS SHALL BE OF THE BEST QUALITY.
19. ALL THE MATERIALS SHALL BE OF THE BEST QUALITY.
20. ALL THE MATERIALS SHALL BE OF THE BEST QUALITY.

ITEM	DESCRIPTION	UNIT	QUANTITY	REMARKS
1	CEMENT	TON	100	
2	BRICK	SQ. M	100	
3	ROOFING	SQ. M	100	
4	PAINT	LITRE	100	
5	GLASS	SQ. M	100	
6	IRON	TON	100	
7	STEEL	SQ. M	100	
8	ALUMINUM	SQ. M	100	
9	COPPER	SQ. M	100	
10	ZINC	SQ. M	100	
11	BRASS	SQ. M	100	
12	SILVER	SQ. M	100	
13	GOLD	SQ. M	100	
14	PLATINUM	SQ. M	100	
15	PALLADIUM	SQ. M	100	
16	RHODIUM	SQ. M	100	
17	IRIDIUM	SQ. M	100	
18	OSMIUM	SQ. M	100	
19	COBALT	SQ. M	100	
20	NICKEL	SQ. M	100	

Sanjay Das
FOR SELF AND LAWFUL CONSTITUTE
ATTORNEY AT LAW, RAJUR, MADHUPUR
RAJUR, MADHUPUR, RAJUR, MADHUPUR
RAJUR, MADHUPUR, RAJUR, MADHUPUR
RAJUR, MADHUPUR, RAJUR, MADHUPUR
RAJUR, MADHUPUR, RAJUR, MADHUPUR

Amir Ganguly
Regional Architect
RAJUR, MADHUPUR, RAJUR, MADHUPUR
RAJUR, MADHUPUR, RAJUR, MADHUPUR
RAJUR, MADHUPUR, RAJUR, MADHUPUR
RAJUR, MADHUPUR, RAJUR, MADHUPUR

Madhurya Halder
Regional Architect
RAJUR, MADHUPUR, RAJUR, MADHUPUR
RAJUR, MADHUPUR, RAJUR, MADHUPUR
RAJUR, MADHUPUR, RAJUR, MADHUPUR
RAJUR, MADHUPUR, RAJUR, MADHUPUR

Signature of Owner: *[Signature]*
Signature of Architect: *[Signature]*

CERTIFICATE OF STRUCTURAL ENGINEER
I hereby certify that the above mentioned structure is designed and constructed in accordance with the provisions of the Indian Standards Code of Practice for Reinforced Concrete Structures and other relevant codes of practice and that the same is safe and sound for the intended use and purpose.

ALOK ROY
Regional Structural Engineer
RAJUR, MADHUPUR, RAJUR, MADHUPUR
RAJUR, MADHUPUR, RAJUR, MADHUPUR
RAJUR, MADHUPUR, RAJUR, MADHUPUR
RAJUR, MADHUPUR, RAJUR, MADHUPUR

MS. MITA SAHA
M.E., M.T. (Struct), C.E.
RAJUR, MADHUPUR, RAJUR, MADHUPUR
RAJUR, MADHUPUR, RAJUR, MADHUPUR
RAJUR, MADHUPUR, RAJUR, MADHUPUR
RAJUR, MADHUPUR, RAJUR, MADHUPUR

Signature of Structural Engineer: *[Signature]*

PROJECT
PROPOSED (G+4) STORED RESIDENTIAL BUILDING AT PALCONM BHARATAPUR, HOLDING NO-684, 65 DAG NO 1231, 1236, 1237, 1237/1805, KHATAN NO-311, 1793, 1727, J.L. NO-47, MOUZA-BARNANE-TARTABAD, UNDER RAJUR, MADHUPUR MUNICIPALITY, WARD NO -28, KOLKATA.

BLOCK NAME : BLOCK 02

SHEET TITLE : BLOCK 02 - FLOOR PLAN, ROOF PLAN, SECTION, DOOR & WINDOW SCHEDULES AND SPECIFICATION

DRAWING NO. : TB/18/18/02/02/02/02/02

DATE : 30.12.2016

SCALE : 1:100

Checked by: *[Signature]*
RAJUR, MADHUPUR MUNICIPALITY

APPROVED
Plan No. 312/2016/35 Date: 31/03/2017

31.03.17
Partina Gupta
RAJUR, MADHUPUR MUNICIPALITY